

MONTHLY MEMBERSHIP PROGRESS REPORT

LOCATION INDIA

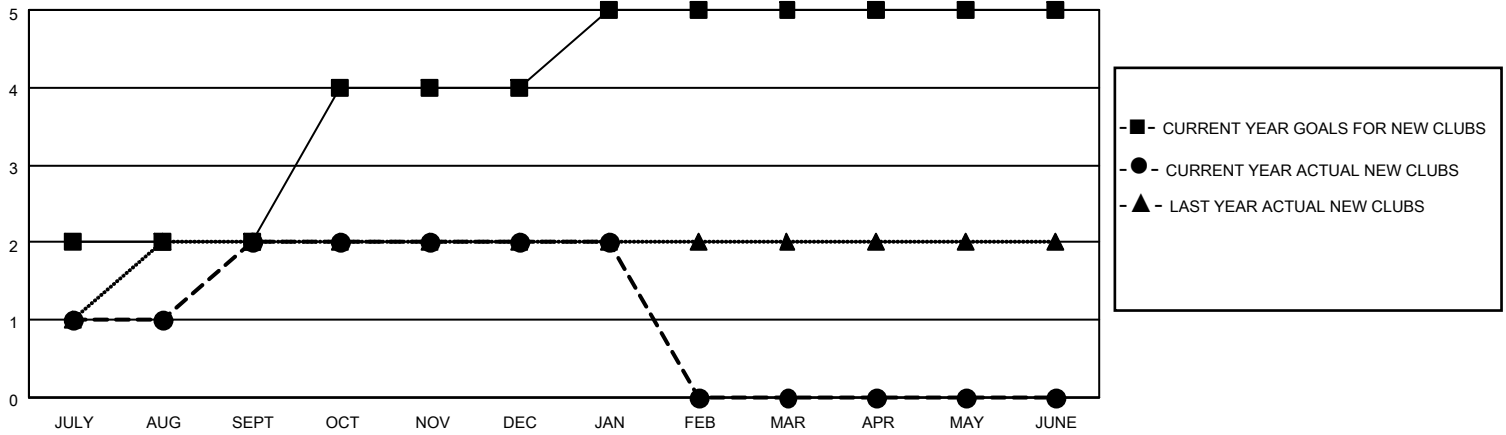
District 322C4

Results as of: 1/31/2022

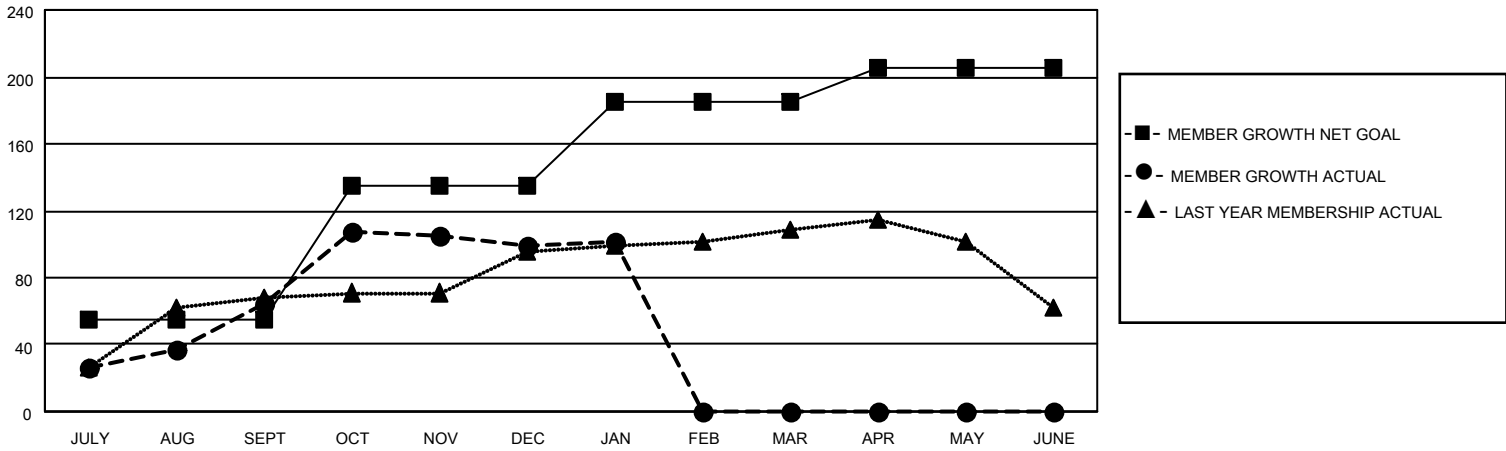
| Clubs | | | |
|-----------------------|---------------|-----------|---------------|
| RESULTS FOR 2021-2022 | | | |
| QUARTER | NEW CLUB GOAL | NEW CLUBS | DROPPED CLUBS |
| JULY/AUG/SEPT | 2 | 2 | 0 |
| OCT/NOV/DEC | 2 | 0 | 1 |
| JAN/FEB/MAR | 1 | 0 | 0 |
| APR/MAY/JUNE | 0 | 0 | 0 |

| Members | | | |
|-----------------------|------------------------|----------------------|--|
| RESULTS FOR 2021-2022 | | | |
| QUARTER | MEMBER GROWTH NET GOAL | MEMBER GROWTH ACTUAL | DROPPED MEMBERS ACTUAL (including transfers) |
| JULY/AUG/SEPT | 55 | 83 | 15 |
| OCT/NOV/DEC | 80 | 100 | 63 |
| JAN/FEB/MAR | 50 | 13 | 10 |
| APR/MAY/JUNE | 20 | 0 | 0 |

GOALS AND ACTUAL NEW CLUBS CUMULATIVE



GOALS AND ACTUAL MEMBERS CUMULATIVE



DROPPED CLUBS: 1

25 CLUBS OF 45 ADDED 1 OR MORE NEW MEMBERS

GENDER DISTRIBUTION

DROPPED MEMBERS

| | |
|----------------|-----------|
| DECEASED | 1 |
| CLUB CANCELLED | 23 |
| OTHER | 64 |
| TOTAL | 88 |

[CLICK HERE FOR CUMULATIVE MEMBERSHIP DATA](#)

| | |
|----------------------|--------------|
| MALE | 902 (65.13%) |
| FEMALE | 483 (34.87%) |
| NON BINARY | 0 (0.00%) |
| PREFER NOT TO ANSWER | 0 (0.00%) |

TOTAL FAMILY UNIT MEMBERS 817

FAMILY MEMBERS PAYING HALF DUES 491